



FOREST
ECONOMIC PARTNERSHIP
Delivering a thriving economy

Forest Economic Partnership Stakeholder Meeting

10 June 2022

Welcome

(Neil Ricketts)

Agenda

1. Welcome & introductions – Neil Ricketts
2. SPF & Opportunity for FEP Stakeholders – Ian Price & Neil Ricketts
3. SPF – Climate Emergency considerations – Alastair Chapman

BREAK

4. SPF – facilitated break-out discussion against 3 SPF investment themes
5. SPF – Feedback Session – Neil Ricketts & facilitators
6. FEP – Stakeholder Update - Wendy Jackson
7. FEP - Project Updates
 - Inspiring Forest - Sarah Taylor Phillips
 - Forest Business Climate Charter - David Trevelyan



UK Government



UK Shared Prosperity Fund





What is the United Kingdom Shared Prosperity Fund?

£2.6 bn of new funding for local investment by March 2025, as part of a suite of complementary Levelling Up funding. It will:



Provide all areas of the UK with an allocation of revenue and capital funding - via a funding formula, not a competition.



Ramp up from 2022-23, with funding reaching £1.5bn a year by 2025.



Empower each place to identify and build on their own strengths and needs at a local level, **focused on pride in place** and increasing life chances.



Delegate delivery of the fund to local authorities, supported by local partners.



Enable local places to build a package of funding, drawing on other programmes such as the Levelling Up Fund or employment and skills support to maximise impact and simplify delivery.



Investment Priority	Summary of objectives
Community and Place	<ul style="list-style-type: none">• Strengthening our social fabric and fostering a sense of local pride and belonging.• To build resilient and safe neighbourhoods.
Supporting Local Business	<ul style="list-style-type: none">• Creating jobs and boosting community cohesion by supporting local businesses.• Promoting networking and collaboration and stimulating innovation and growth.• Targeted support to help businesses grow - e.g. innovation, productivity, energy efficiency, low carbon and exporting.
People and Skills	<ul style="list-style-type: none">• Boosting core skills and support adults to progress in work.• Supporting disadvantaged people to access the skills they need.• Funding local skills needs and supplementing local adult skills provision.• Reducing levels of economic inactivity and supporting those furthest from the labour market.



Investment Priorities Example Interventions - copies on tables



Communities and Place

- Improvements to town centres and high streets
- 'Designing out crime' interventions
- Support for local arts, cultural, heritage and creative activities
- Active travel enhancements
- Volunteering and/or social action projects
- Funding for local sports facilities, tournaments, teams and leagues



Supporting Local Business

- Investment in open markets and improvements to town centre retail and service sector infrastructure
- Development and promotion of the visitor economy
- R&D grants supporting the development of innovative products and services
- Business support measures to drive employment growth



People and Skills

- Employment support for economically inactive people
- Intervention to increase levels of digital inclusion
- Support to help people in employment, who are not supported by mainstream provision to address barriers to accessing education and training courses
- Support for local areas to fund local skills needs
- Green skills courses

Available from 2024-25
in England



FoDDC will be given responsibility for:

- developing an Investment Plan for approval by the UK government
- receiving an area's allocation to manage
- assessing and approving project applications
- processing payments and day-to-day monitoring

FoDDC will have flexibility over how they deliver the Fund. They may wish to use a mix of:

- Competitions for grant funding (the default approach set out in [Cabinet Office Grants Standards](#));
- Procurement;
- Commissioning; or
- Deliver some activity through in-house teams.



Local insight and expertise is essential for the Forest of Dean to identify and address need and opportunity. This will enable the delivery of the right solutions for each place.

- FEP's role is to encourage local stakeholders to engage with the Council, participate in these groups, sharing your insight and helping to shape the investment plans which will be submitted in Summer.
- FEP stakeholders may also be able to help in:
 - Sharing best practice between areas
 - Identifying opportunities to collaborate to achieve fund outcomes.



Forest of Dean District Council SPF allocation

2022-2023	2023-2024	2024-2025
£119,468	£238,936	£641,596

Timeline

- Year 1 Expression of Interest call closes 19th June
- SPF Investment Plan finalised 27th June
- FoDDC Cabinet meet 14th July
- Government approve Investment Plans October
- Opportunity for FoDDC to build a project pipeline review & update annually
- **FEP's role - raising awareness, collective voice**

*Investment Plan
Presented to
FoDDC Cabinet*

*Government
Approval*

1

10 June 2022

2

14 July 2022

3

1 August 2022

4

October 2022

5

March 2025

*FEP Stakeholder
Meeting*

*Deadline for
Submission to
Government*

Allocation Ends



Key Areas of Discussion

Public Realm Improvements:

- Public Toilet Improvements
- Trees in Towns programme
- Bus Stop and RTPI improvements

Active Travel Strategy & Masterplan

Forest of Dean Biosphere Reserve UNESCO Designation

Employment and Training Schemes

Business Grants & Loans Programme

Digital Inclusion Strategy

Biodiversity Tool Kit

New Employment Workspace

Community Renewable Energy Scheme



Looking Beyond

**SPF - Embedding the Climate Emergency in projects
(At EOI stage)**



Forest of Dean
DISTRICT COUNCIL

CLIMATE ACTION for Forest of Dean

Alastair Chapman
Sustainability Team Leader
alastair.chapman@fdean.gov.uk



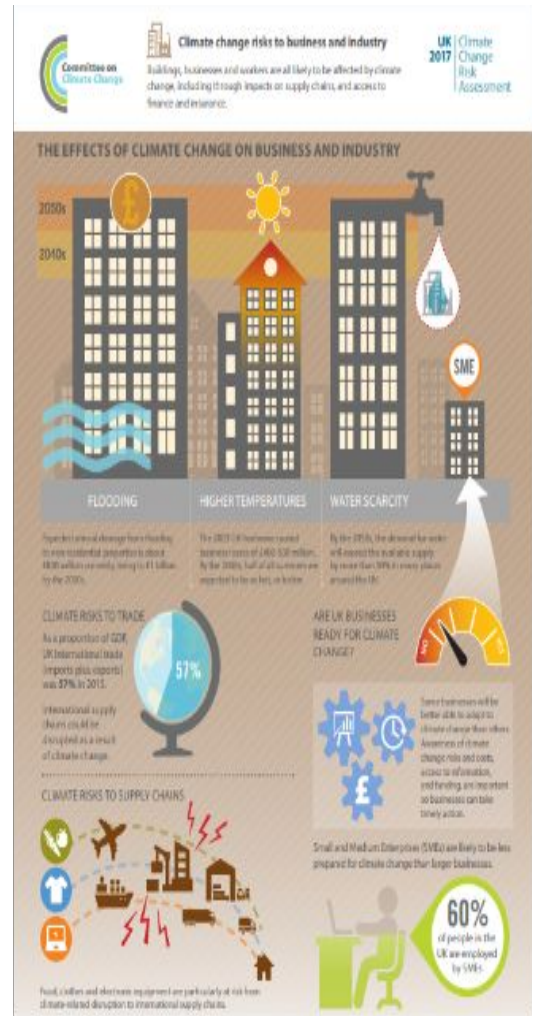
Interventions supported by UKSPF will need to consider other local and national policies and priorities [including]

- **FoD Climate Emergency Strategy** ✓ <https://www.fdean.gov.uk/media/0azk4inr/draft-foddc-climate-emergency-strategy-and-action-plan-2022-25-sept-21.pdf>
- **Net zero and nature recovery objectives** ✓ <https://www.gov.uk/government/publications/net-zero-strategy>
- **At minimum – consider the project’s impact on our natural assets and nature** ✓ <https://www.gov.uk/guidance/enabling-a-natural-capital-approach-enca>
- **The 25 Year Environment Plan** ✓ <https://www.gov.uk/government/publications/25-year-environment-plan/25-year-environment-plan-our-targets-at-a-glance>
- **Local Nature Recovery** ✓ <https://www.gloucestershirenature.org.uk/nature-recovery-network>



How will the project support the Forest of Dean's Net Zero 2030 Goals? Does the project contribute to wider environmental considerations such as resilience to natural hazards and the 25 Year Environment Plan?

<p>Taking account of the Changing Climate (Adaptation)</p>	<p>? Impacts of increased Flooding ? Impacts of increase Heat ? Water availability (scarcity) ? Natural environment changes ? Biodiversity loss / recovery</p>	<p>Reduce vulnerability*</p>
<p>Reducing the causes of Climate change (mitigation)</p>	<p>? Carbon reduction measures ? Renewable energy generation ? Carbon Storage safeguarding and increasing (sequestration)</p>	<p>Reduce Co2e emissions (rapidly)*</p>

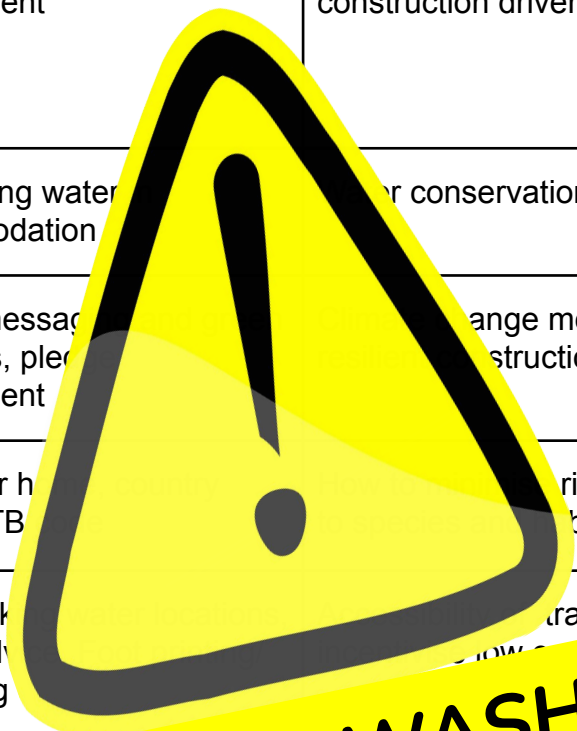


<https://www.theccc.org.uk/wp-content/uploads/2016/07/CCRA-Ch6-Business-and-industry-infographic.pdf>

<https://www.theccc.org.uk/uk-climate-change-risk-assessment-2017/ccra-chapters/business-and-industry/>

Scenario	<p>Organisation A</p> <p>Wishes to create a new open public events space in the town / village centre</p>	<p>Organisation B</p> <p>Development of a local APP to support the local tourism industry.</p>	<p>Organisation C</p> <p>Provide training to meet the need for a construction skills shortage</p>
Risk of ↑ Flooding			
Risk from ↑ Heat			
Water Conservation			
Natural Envi' Changes			
Biodiversity			
Carbon reduction			
Renewable energy			
Carbon storage			

	New open public events space	Local APP to support the local tourism	Construction skills shortage training
Risk of ↑ Flooding	Surfacing, tree cover, planting, Suds	Impact messaging and green initiatives, pledge commitment	Include climate change module around resilient construction drivers
Risk from ↑ Heat	Shade, canopy, orientation		
Water Conservation	Drought sensitive planting.	Conserving water accommodation	Water conservation
Natural Envi' Changes	Suitable species, Peat, pesticides	Impact messaging initiatives, pledge commitment	Climate change module around resilient construction drivers
Biodiversity	Habitats, features	Take litter home code, MTB	Risk of impacts habitats
Carbon reduction	Materials used, lighting, accessibility	Free drinks Travel advice/off setting	Training / Low carbon travel
Renewable energy	On site, investment nearby,	App hoster, advice/provi	Transition to the sector
Carbon storage	Soil conservation, trees	How to support the management of the local environment	Carbon Impacts of materials



GREEN WASH

Thank you



CLIMATE ACTION for Forest of Dean

Alastair Chapman
Sustainability Team Leader
alastair.chapman@fdean.gov.uk

FEEDBACK

Supporting Local Business

Challenges	Opportunities	Priority Outcomes	Collaborations
<ul style="list-style-type: none"> ● Transport & Connectivity <ul style="list-style-type: none"> ○ Transport to education & employment ○ Frequency and availability issues ● Recruitment <ul style="list-style-type: none"> ○ Attracting the right skills ○ Attracting any employees ○ Employment market ○ Affordability of recruiting (advertisement fees) ● Energy Efficiencies (supporting the rising energy costs) ● Access to finance ● Access to high speed internet (Hotspot Areas) ● Being slow to adapt to change ● Lack of Business spaces ● Land Values ● Legislation and Regulations 	<ul style="list-style-type: none"> ● Work/Life Balance as a mechanism to attract talent ● Tech Nations ● Transport Decarbonisation Plan ● Inspiring Forest ● Forest of Dean Biosphere Reserve ● Forest Business Climate Charter <ul style="list-style-type: none"> ○ Knowledge Sharing ● APP based token in the Forest of Dean ● Business Shared Resource <ul style="list-style-type: none"> ○ Energy ○ Logistics & Transport ● Environmentally friendly start-up premises ● Changes in planning legislation for green developments ● APP for remote working 	<p>TOP 3</p> <ul style="list-style-type: none"> ★ Job Safeguarding ★ Increased Investments ★ Improved perceptions of attractions <ul style="list-style-type: none"> ● Improved perception of markets ● Job Creation ● Increase Footfall 	<ul style="list-style-type: none"> ● Forest Economic Partnership

Community & Place

Challenges	Opportunities	Priority Outcomes	Collaborations
<ul style="list-style-type: none"> ● Lack of communication across the District (A40 divide/Forest towns). ● Attracting people to the area to live. ● Attracting visitors to the area (overnight or longer stays). ● Quality and lack of tourist attractions for visitors post pandemic. ● Quality of community facilities in relation to carbon efficiency. ● Energy prices and the viability of community groups. ● Flooding/Heat Increase - Vulnerability to climate change (physical interventions/education). ● Out migration of working age people to work outside of the District. ● Connectivity - Transport Infrastructure is poor ● Connectivity - Lack of digital connectivity consistency across the District. ● Cost of Living 	<ul style="list-style-type: none"> ● Newent - Rebranding as Gateway to the Forest (creating greater links across the A40). ● Social revolution post pandemic with more people working from home. <ul style="list-style-type: none"> ○ Increased economic spend with people spending where they work/live ○ Environmental benefits ○ Leisure Industry growth ○ Improved access to volunteers ○ Creation of 'Pride of Place' mentality ● Active Travel opportunities. <ul style="list-style-type: none"> ○ Cycling (Leisure) ○ Shared transport ○ Trams/public transport improvements ● Green Infrastructure in town centres ● Community Togetherness - Events are well received post pandemic, people want to socialise. Potential for schemes to harness this spirit. 	<p>TOP 3</p> <ul style="list-style-type: none"> ★ Safeguarding Jobs/Creating Jobs ★ Increasing footfall ★ Increased take up of energy efficiency measures <ul style="list-style-type: none"> ● Greenhouse gas reduction ● Protection from flooding ● Increase in biodiversity. ● No. of community led arts, cultural, heritage and creative programmes. ● Digital Connectivity ● Increased visitor numbers (overnight stays) 	<ul style="list-style-type: none"> ● District and Town Council Asset Joining to maximise impacts. ● Links with education providers and businesses to increase community buy in. ● Building on the Our Forest from the Foresters Forest work. ● Linking with charitable/voluntary organisations (Gloucestershire Wildlife Trust, Severn and Wye Energy Agency)

People & Skills

Challenges	Opportunities	Priority Outcomes	Collaborations
<ul style="list-style-type: none"> ● Recruitment ● Skills Train <ul style="list-style-type: none"> ○ Low skills sector struggling to recruit ○ Skilled employees retiring or leaving and not being able to replace those employees. ● Foundation Industries <ul style="list-style-type: none"> ○ Education of new products and opportunities to the business market. ● Lack of Education ● <i><u>If Skills aren't green then they are skills of the past</u></i> ● Being able to afford to become a volunteer ● Social Mobility ● Being able to afford to travel for education & employment. ● Isolation & Social Anxiety 	<ul style="list-style-type: none"> ● Aspiration Centre at Five Acres in Partnership with Hartpury ● Support for community centres and volunteer groups to become social enterprises. ● New industries in the Forest of Dean such as HempCrete. ● Hartpury Tech Box Park. ● Dean Heritage Centre - Green Example of Preserving History for Tomorrow. ● Expansion of the Wild Towns programme into other towns in the district. ● Employment & Skills Hubs ● Business Education & Planning for young people ● Flexible working 	<p>TOP 3</p> <ul style="list-style-type: none"> ★ Increased employability through interpersonal skills ★ Increase number of people with basic skills ★ Increased number of people familiar with employer expectations and standard of behaviour in the workplace <ul style="list-style-type: none"> ● Number of people in education or training ● Number of economically inactive in receipt of benefits following support (NEETS) 	<ul style="list-style-type: none"> ● Growth Hubs ● FSB ● Black Mountain College - example of green degrees and courses. ● Gloucestershire Wildlife Trust ● Hartpury College & University ● Gloucestershire College

Forest Economic Partnership & CIC Update

(Wendy Jackson)

The Board



In April, the Board welcomed Stuart Emmerson, Director of Business Development Director at Hartpury University & Hartpury College to join the Board. As a new FEP Director, Stuart will be providing the Education Champion role this year.

Financials

Account Balance	£ 20,252.55
Allocated Funding: Inspiring Forest	£ 13,945.60
Allocated Funding: Biosphere Reserve	£1323.00
Allocated Funding: Transport Study	£3,700.00
Allocated Funding: FoCUS	£380.00
Core Funding	£ 903.95

Project Updates

Inspiring Forest



The project aims to hold a 3-year rotating programme of inspirational events celebrating the strength and diversity of District business and showcasing the jobs and opportunities available for young people within these businesses and sectors. This will enable individuals to consider a full range of employment opportunities available. The events focus on the key diverse employment sectors identified in the District.

24 November 2022
Inspiring Forest
Event



Forest Business Climate Charter



 SCAN ME

AOB

Follow Us on Social Media



@FEP2050

www.fep2050.co.uk